

86'S Azimut 2005



Year: 2005

The Azimut 86'S "Dream 55" has been hailed as one of the trendsetting open yacht designs. Its unique symmetrical square portholes, distinct red hull color and beautifully appointed interior makes Dream 55 one of the hottest yachts in the Med.

Dream 55, was built and commissioned by Azimut in August 2005. She is professionally run by a fully qualified European captain and crew who have kept her in as new condition throughout. She represents one of the best Azimut 86S available in the world today.



SPECIFICATION

- Length overall (incl. pulpit): 26.49 m / 86' 10"
- Hull length (incl. platform): 26.21 m / 85' 12"
- Beam at main section: 6.15 m / 20.71'
- Draft (incl. props. at full load): 1.4 m / 4'.5"
- Displacement (at full load): 62 t
- Engines: 2 x 2000 MHP (1470 kW) MTU 16V2000M91
- Engine Hours: 500
- Transmissions: ZF
- Props: 6-blade nibral
- Steering: BCS hydraulic
- Controls: MTU electronic
- Maximum speed (at half load): 44 Knots
- Cruising speed (at half load): 33 Knots
- Gensets: 2x 17.5-kW Kohler
- A/C: 120,000-Btu Cruisair tropical w/ SMX II controls
- Fuel capacity: 6000 l / 1585 US gls
- Water capacity: 1100 l / 290 US gls
- Cabins: 4 + crew
- Berths: 8 + crew
- Building material: Vinyster resin, carbon aramid and GRP
- Keel: V-shape with angle of deadrise 12,1° aft
- Exterior Styling & Concept: Stefano Righini
- Interior Designer: Carlo Galeazzi



EXTERIOR

Architect Stefano Righini, inspired by the winning style of the 68' model, designed the 86S with the same symmetrical series of square portholes. The deckhouse has the trade mark "shark's fin" windows.

The main deck offers innovative solutions for improved comfort on board and is superb for daytime activities. It is fitted with a dining table for eight and a cocktail cabinet with sink, fridge icemaker and barbecue. The sun-bed's forward section turns into a sofa offering seating for the dining table. The aft platform may be used as a swim/ dive platform, or for a multitude of activities from swimming and diving to al fresco waterside dining. It also lowers to provide a system to retrieve the Zodiac Project 420 tender and the Kawasaki Jet Ski.





INTERIOR

Interior architect Carlo Galeazzi, has given an original touch to the interior with contrasting colors and materials. The floors are in wengé wood with bordered carpet inserts, while pale hues have been chosen for fabrics with burgundy inserts. The salon has four small sofas and a folding coffee table, opposite which there are the cocktail cabinet and accessories for leisure time such as a plasma TV set, a stereo and DVD system. The table in the salon can be used as a coffee table or fold-out dinner table. A superb stereo system provides surround sound.

















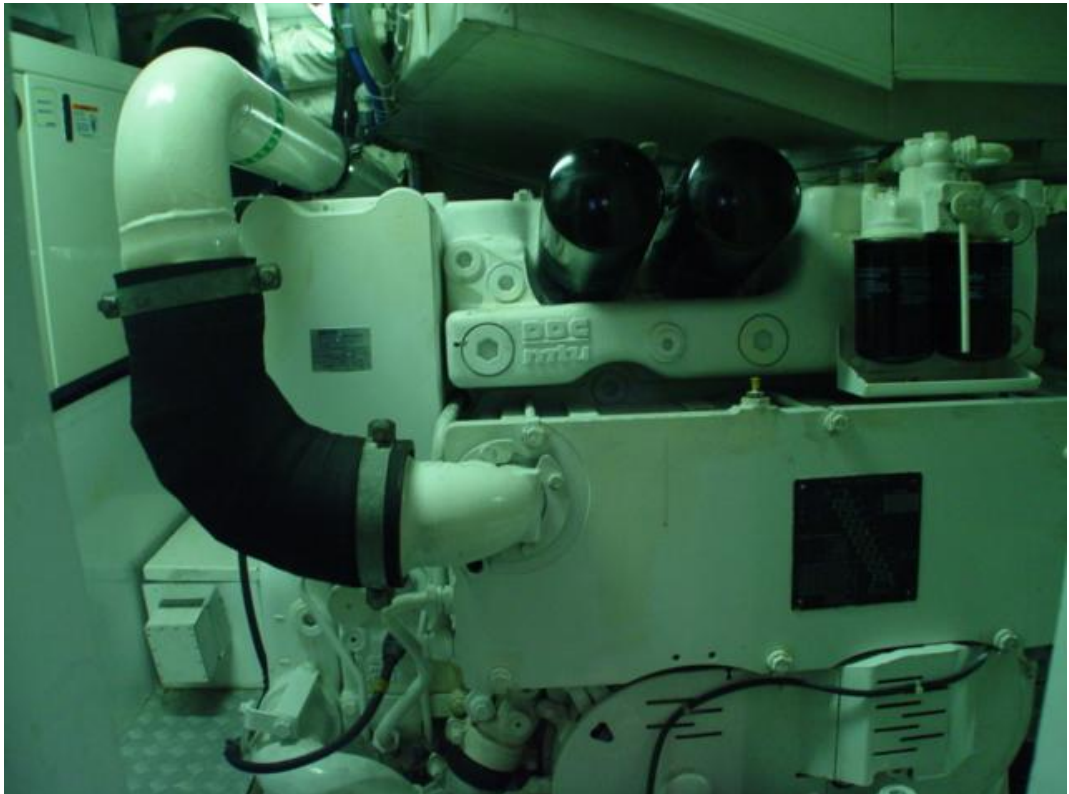
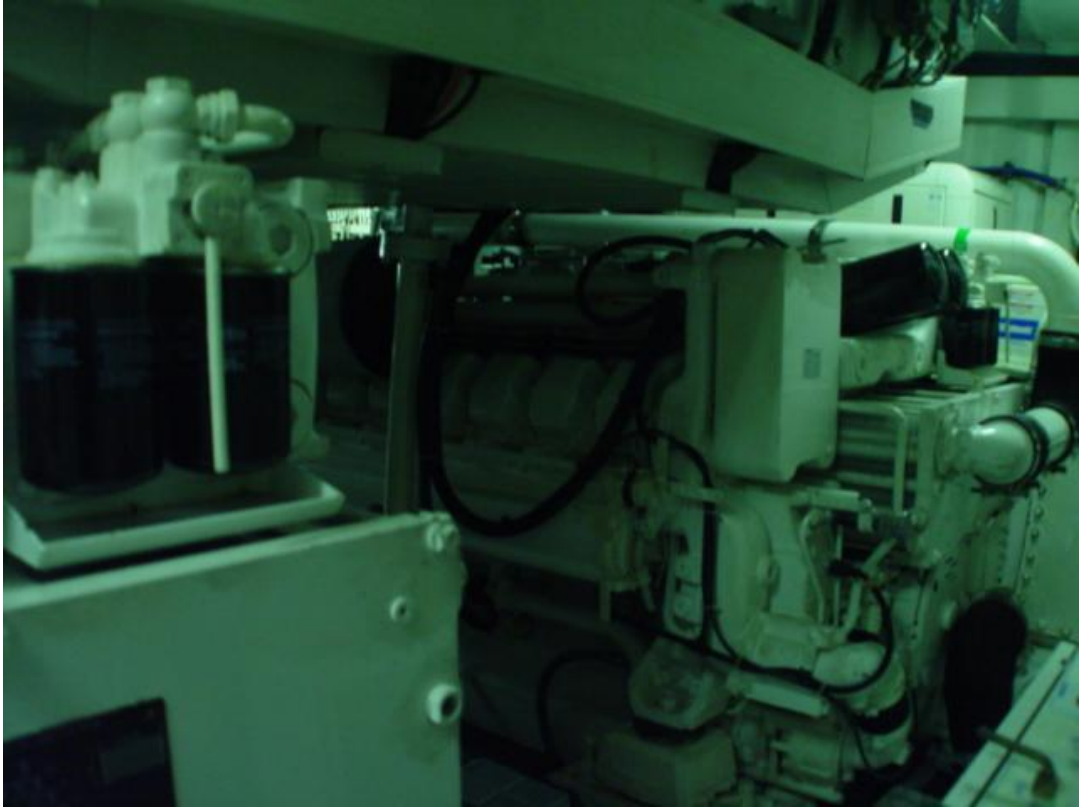
INVENTORY

- Underwater Lights in transom
- Desalinator (Watermakers USA aprox 160 lt/hr)
- x2 Kohler 17.5kW Gens
- Sea water wash for chain
- 120m of chain/Loop N style anchor
- x2 Capstan winches for aft lines
- Soft start on ac compressors
- Storage for 4 dive bottles
- Yacht Controller (remote helm)
- Night Vision
- All new TV + System from music, remote RCI, ect.
- Serviced and fully crewed (crew 3 pers.) all the time
- Best Linens
- All new Alcantara original Leather
- Avon Projet 280 (inboard jet) - 40 knots top speed (plus anchor)
- Jetski Kawasaki 2008
- Full set of warps and fenders
- Cutlery
- Crockery
- Glassware
- All Deck cushions plus covers
- Sun Bimini for back deck
- 6 deck chairs (86S emblem)
- Bose Lifestyle 48 (top of the line) in salon and owners cabin
- TV's in all cabins (through Glomex)
- Remote control for lights/music
- Deck LED's
- KVH Track Phone Sat system (including handset)
- Raymarine Instrumentation - E120 plotter/radar, Autopilot, Speed/Depth, VHF/DSC, Loudhailer
- Sanshin spotlight
- Window covers
- x2 Boathook
- Icemaker in cockpit/Drinks drawer
- x2 Fridge in salon
- Miele appliances (Oven and Microwave combo, Washer, Dryer) Fridge/Freezer









The lower deck accommodates the owner's master stateroom amidships, making the most of the full beam of the hull. It is fitted with a central queen-size bed illuminated by six ample portholes on both bulwarks, a study corner to port, a vanity to starboard and ensuite bathroom. The three double guest cabins include one VIP double and two Twins, all with ensuite bathrooms, are forward. Crew quarters are aft and include the galley and engine room access.











